



GAT MONTHLY MEMBERSHIP PROGRESS REPORT

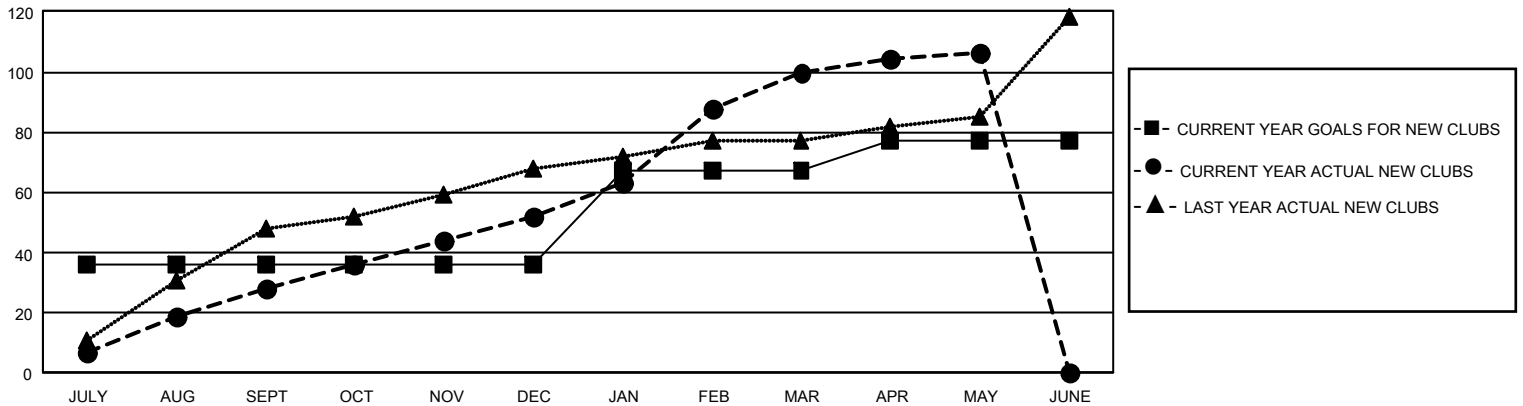
Results as of: 5/31/2025

GMT Constitutional Area 6 - I, Group D

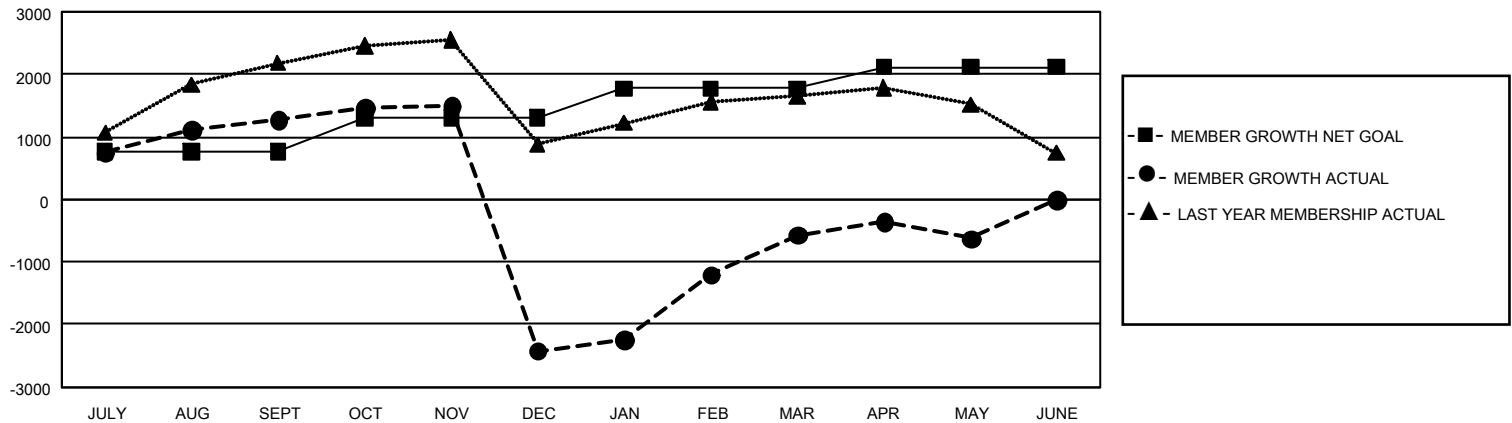
REPORT DOES NOT INCLUDE CLUBS IN UNDISTRICTED AREAS.

Clubs				Members			
RESULTS FOR 2024-2025				RESULTS FOR 2024-2025			
QUARTER	NEW CLUB GOAL	NEW CLUBS	DROPPED CLUBS	QUARTER	MEMBER GROWTH NET GOAL	MEMBER GROWTH ACTUAL	DROPPED MEMBERS ACTUAL (including transfers)
JULY/AUG/SEPT	108	28	17	JULY/AUG/SEPT	765	2,078	620
OCT/NOV/DEC	0	24	110	OCT/NOV/DEC	545	1,511	5,089
JAN/FEB/MAR	93	48	18	JAN/FEB/MAR	465	3,140	736
APR/MAY/JUNE	30	6	2	APR/MAY/JUNE	340	928	755

GOALS AND ACTUAL NEW CLUBS CUMULATIVE



GOALS AND ACTUAL MEMBERS CUMULATIVE



DROPPED CLUBS: 147

657 CLUBS OF 1,177 ADDED 1 OR MORE NEW MEMBERS

GENDER DISTRIBUTION

MALE	28,148 (75.05%)
FEMALE	9,355 (24.94%)
NON BINARY	0 (0.00%)
PREFER NOT TO ANSWER	5 (0.01%)

DROPPED MEMBERS

DECEASED	105
CLUB CANCELLED	3,382
OTHER	3,697
TOTAL	7,184

[CLICK HERE FOR CUMULATIVE MEMBERSHIP DATA](#)

TOTAL FAMILY UNIT MEMBERS 12,673

FAMILY MEMBERS PAYING HALF DUES 7,392